



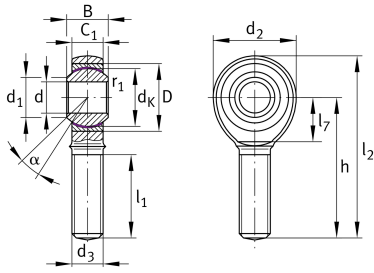
## GAKL8-PW-A

Rod end

Schaeffler ID:  
0066334550000

Rod end GAKL...-PW, external threads,  
maintenance-free

### Technical information



### Main Dimensions & Performance Data

|                 |          |                                   |
|-----------------|----------|-----------------------------------|
| d               | 8 mm     | Bore diameter bearing             |
| d <sub>2</sub>  | 24 mm    | Outer eye diameter                |
| D               | 19 mm    | Outside diameter bearing          |
| l <sub>2</sub>  | 54 mm    | Total length external thread rod  |
| B               | 12 mm    | Width inner ring                  |
| C <sub>r</sub>  | 12,900 N | Basic dynamic load rating, radial |
| C <sub>0r</sub> | 12,900 N | Basic static load rating, radial  |
|                 | 0.042 kg | Weight                            |

### Dimensions

|                 |              |  |
|-----------------|--------------|--|
| d <sub>k</sub>  | 15.875 mm    | Ball diameter                          |
| d <sub>1</sub>  | 10.3 mm      | Outer flange diameter inner ring       |
| d <sub>3</sub>  | M8           | Thread size                            |
| h               | 42 mm        | Shank Length External thread rod       |
| C <sub>1</sub>  | 9 mm         | Width of the rod end                   |
| α               | 14 °         | Tilt angle                             |
| l <sub>1</sub>  | 25 mm        | Thread length external thread          |
| G <sub>r</sub>  | 0 - 0,035 mm | Radial Clearance                       |
| d <sub>T</sub>  | H7 mm        | Bore diameter bearing, tolerance       |
| d <sub>OT</sub> | 0.015 mm     | Bore diameter bearing, upper tolerance |
| d <sub>UT</sub> | 0 mm         | Bore diameter bearing, lower tolerance |
| B <sub>OT</sub> | 0 mm         | Width inner ring, upper tolerance      |
| B <sub>UT</sub> | -0.12 mm     | Width inner ring, lower tolerance      |

### Mounting dimensions

|                    |        |              |
|--------------------|--------|--------------|
| r <sub>1smin</sub> | 0.3 mm | Edge Spacing |
|--------------------|--------|--------------|

### Temperature range

|                  |        |                            |
|------------------|--------|----------------------------|
| T <sub>min</sub> | -50 °C | Operating temperature min. |
| T <sub>max</sub> | 200 °C | Operating temperature max. |